

# SOL Testing, Spring 2022

---



**We will begin shortly.**

**Music is playing, if you can't hear try logging out and back in again.**

**Feel free to introduce yourself in the chat and what grade your student is in.**

***Gunston Elementary- March 31st 2022***

---

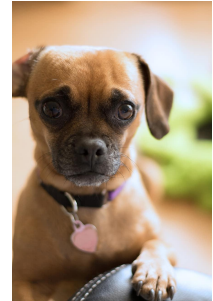
## What does SOL mean?

---

The **Standards of Learning (SOL)** for Virginia Public Schools establish minimum expectations for what students should know and be able to do at the end of each grade or course in English, mathematics, science, history/social science, technology, the fine arts, foreign language, health/physical education and driver education.

---

# How do you feel about spring testing?



All students in grades  
3 – 6 will take a reading  
and math SOL?



# Elementary School SOLs

- ▶ Grade 3 - Reading (CAT), Math (CAT)
- ▶ Grade 4 - Reading (CAT), Math (CAT)
- ▶ Grade 5 - Reading (CAT), Math (CAT), Science
- ▶ Grade 6 - Reading (CAT), Math (CAT)\*

*Students who score between 375-399 are eligible for expedited retakes (with parent permission.)*

*\*Students in Grade 6 ADV Math will take the Grade 7 Math SOL*

# Local Alternative Assessments (LAAs)

- In some subject areas, students take a LAA instead of the SOL test.
- LAAs include performance-based assessments (PBAs) completed as part of classroom instruction throughout the school year for science, writing, and social studies.

<b>Grade</b>	<b>Content Areas Tested</b>
3	Science, Social Studies
4	Social Studies
5	Writing
6	Social Studies
7	Social Studies
8	Social Studies, Writing

True  
FALSE

If my child does not pass all his/her SOLs, he/she can still be promoted to the next grade?

What do the scores mean?

- **Pass/Advanced - 500-600**
- **Pass/Proficient - 400-499**
- **Fail - 0-399**



## Expedited Retakes (ES & MS)

- All students who fail an SOL test with a score of 375-399 are eligible for an expedited retake.
  - Students scoring below 375 on the first attempt may be eligible with special permission
    - Parent/guardian permission required
    - Rationale (extenuating circumstances or significant academic discrepancy)
- Parent/guardian permission is required for the school to administer an expedited retake.

**TEI** means  
Test Everything  
Initiative

---



**A percentage** of the items (depending on the test) are new technology-enhanced items.

There are four types of technology-enhanced items:

- **drag and drop,**
- **hot spot** (which includes number line and coordinate plane items),
- **bar graph or histogram, and**
- **fill-in-the-blank**

The **CAT** tests  
will assess their  
knowledge of  
animals.

---



- 
- A computer adaptive test (CAT) is an assessment that is customized for every student based on how the student responds to the test questions.

# CAT

Grade	Days Testing	Reading	Mathematics
3 <sup>rd</sup>	1 day <i>or</i> 2 days (school decision*)	<b>33 items</b> Approximately 50% before the seal code	<b>32 items</b> Approximately 50% before the seal code
4 <sup>th</sup>	1 day <i>or</i> 2 days (school decision*)	<b>33 items</b> Approximately 50% before the seal code	<b>39 items</b> Approximately 25% before the seal code
5 <sup>th</sup>	1 day <i>or</i> 2 days (school decision*)	<b>33 items</b> Approximately 50% before the seal code	<b>39 items</b> Approximately 25% before the seal code
6 <sup>th</sup>	1 day	<b>38 items</b> No seal code	<b>53 items**</b> Approximately 20% before the seal code

---

Grade	Days Testing	Reading	Mathematics
7 <sup>th</sup>	1 day	n/a	<b>53 items</b> Approximately 10% before the seal code**

# Math SOL CAT

Test Name	Is there a seal code?	Is there a formula sheet?	Are calculators allowed?	Which calculator is <u>allowed</u> ?
Grade 3 Math	Yes		No	
Grade 4 Math	Yes		Part 2	Approved 4 Function Calculator
Grade 5 Math	Yes		Part 2	Approved 4 Function Calculator
Grade 6 Math	Yes	Grade 6 Mathematics Formula Sheet 2016 Mathematics Standards of Learning	Part 2	Approved Scientific Calculator



---

Test Name	Is there a seal code?	Is there a formula sheet?	Are calculators allowed?	Which calculator is <u>allowed</u> ?
Grade 7 Math	Yes	Grade 7 Mathematics Formula Sheet 2016 Mathematics Standards of Learning	Part 2	Approved Scientific Calculator

---

My child can use their phone or iPad during testing as long as they promise not to cheat.



My child has a doctor's appointment at 11. He/She can start the test today and finish it tomorrow.



It is important my  
child is well rested  
and eats a good  
breakfast for their  
test.

---



# Make sure students get enough sleep!

Research shows elementary students require at least **10 hours** to function well!!

---



## You are what you eat!!

Food gives students the fuel they need

to pay attention in class, to study, and do their best on tests!



# Encourage your child to be POSITIVE

---

## Remind them:

- Test taking does get easier as you go along because you get into a routine and set a rhythm.
- Some test questions will be harder than others – just encourage your child to do his/her best!



# Testing Dates

Apr-22				
Monday	Tuesday	Wednesday	Thursday	Friday
4/25 No Testing	4/26 Reading Gr5	4/27 Reading Gr5	4/28 Reading Gr4	4/29 Reading Gr4
May-22				
Monday	Tuesday	Wednesday	Thursday	Friday
5/2 No Testing	5/3 Reading Gr6	5/4 No Testing	5/5 Reading Gr3	5/6 Reading Gr3
5/9 Math Gr5	5/10 Math Gr5	5/11 Math Gr4	5/12 Math Gr4	5/13 Math Gr6
5/16 Math Gr3	5/17 Math Gr3	5/18 Science Gr5	5/19 Make Ups	5/20 Make Ups
5/23 Retakes	5/24 Retakes	5/25 Retakes	5/26 Retakes	5/27 Retakes



# How can families help?



# School Contacts

*Ebony Opie*

*elopie@fcps.edu*

*School Testing Coordinator, Assistant Principal*

*Kristen Rucinski*

*krucinski@fcps.edu*

*Principal*

*Main Office 703-541-3600*



Fairfax County  
PUBLIC SCHOOLS  
ENGAGE • INSPIRE • THRIVE

[www.fcps.edu](http://www.fcps.edu)